

Post-HREP Sedimentation in Upper Lake Onalaska

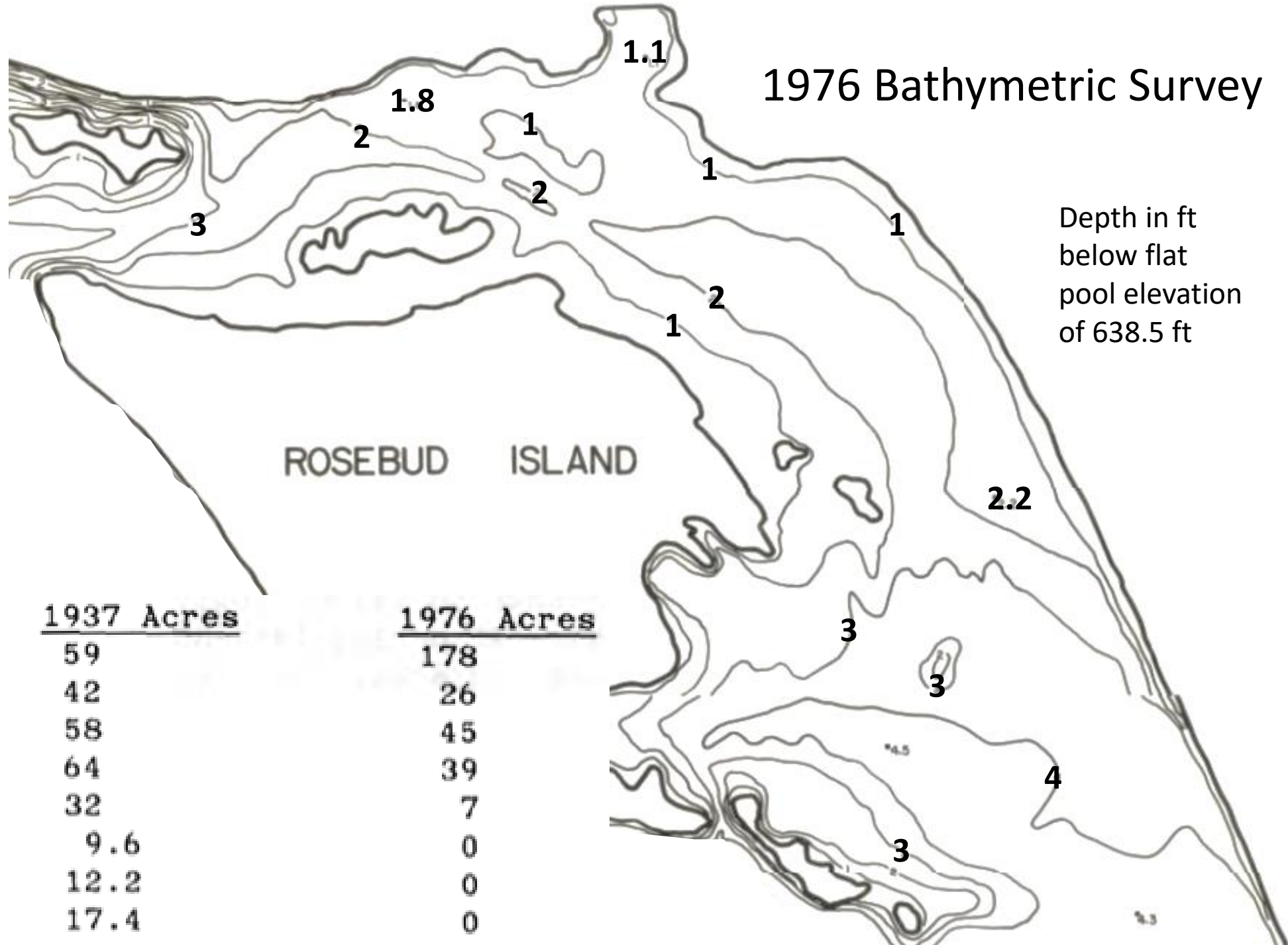
Rosebud Island and channel before HREP



0-6 ft in 1937

560,000 yds³ of sedimentation reduced water volume 37% by 1976.

<2.5 ft by 1976.



Depth Range(feet)

1937 Acres

1976 Acres

0-2.5
2.5-3.0
3.0-3.5
3.5-4.0
4.0-4.5
4.5-5.0
5.0-5.5
5.5-6.0

59
42
58
64
32
9.6
12.2
17.4

178
26
45
39
7
0
0
0

Lake Onalaska HREP

>1 million yd³ of
material removed

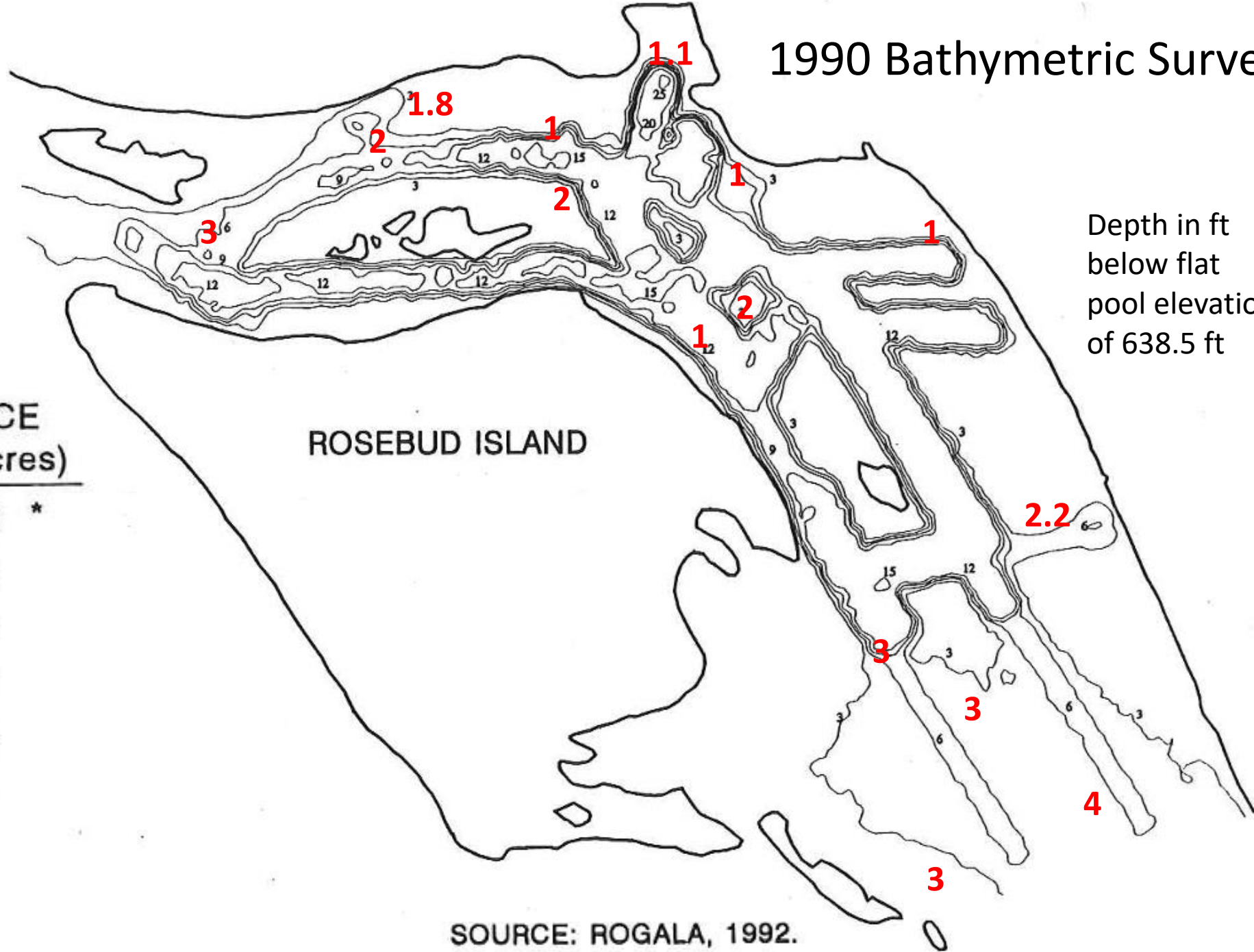
Dredging completed
by November 1989



<https://digitalcollections.uwlax.edu>

1990 Bathymetric Survey

Depth in ft
below flat
pool elevation
of 638.5 ft



DEPTH RANGE (ft)	SURFACE AREA (acres)
0 - 3	161.2 *
3 - 6	74.6
6 - 9	25.6
9 - 12	15.7
12 - 15	56.4
15 - 20	6.0
20 - 25	3.6
> 25	0.1

SOURCE: ROGALA, 1992.

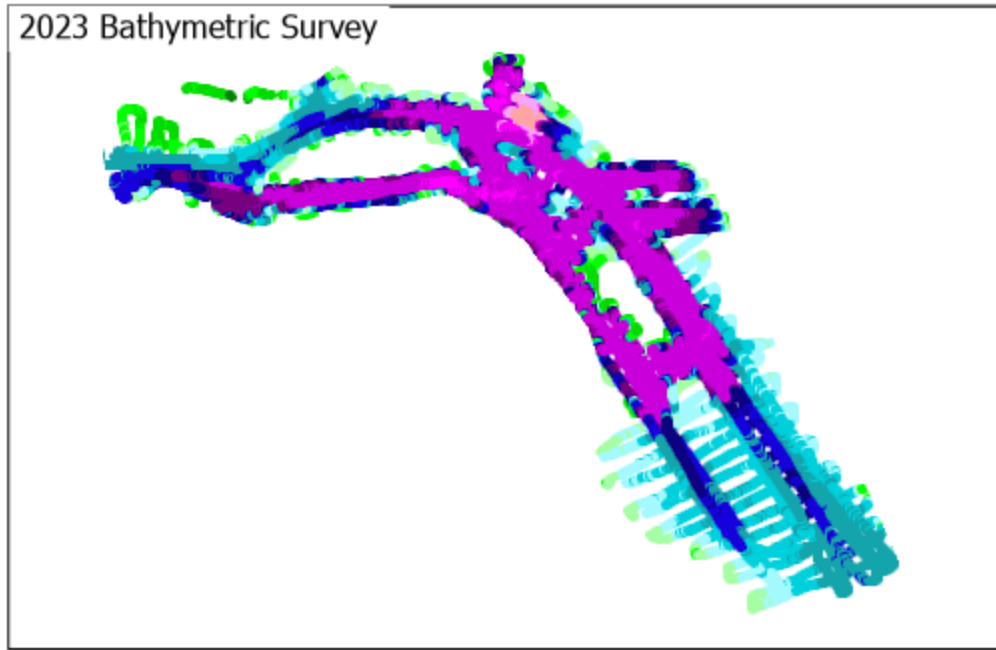


UWL River Studies Center and Department of Geography and Environmental Science Center Hydroacoustic Survey

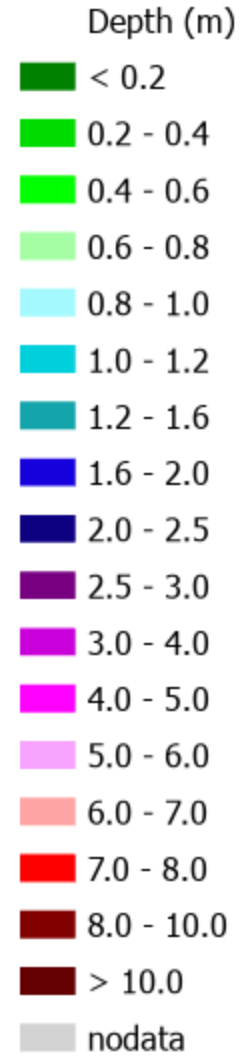
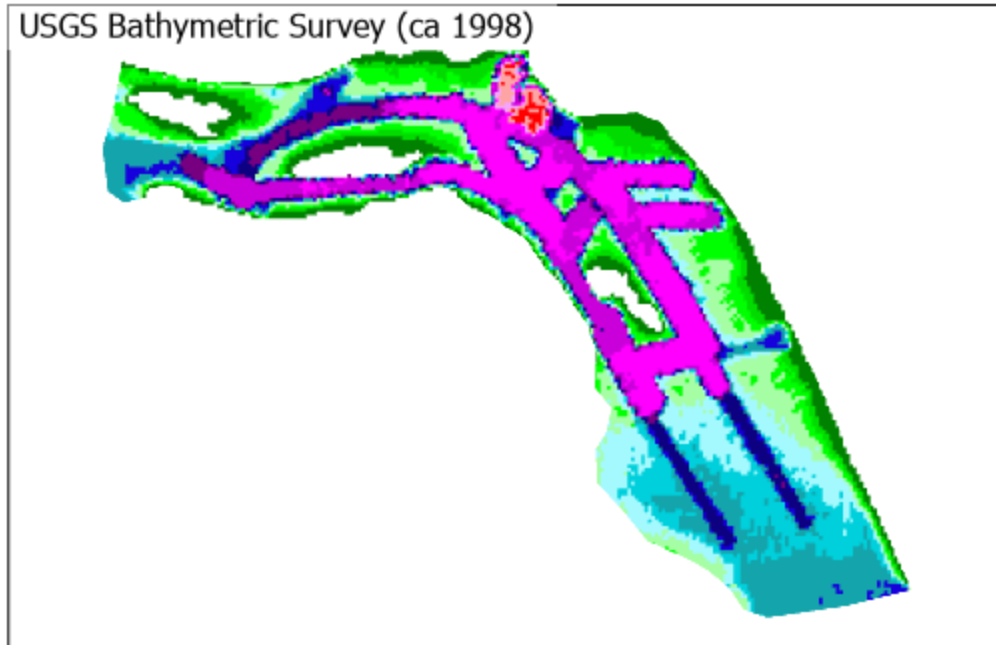
>250,000 depth points mapped in May and June 2023 with a RiverRay ADCP



>250,000 depth points mapped in May and June 2023 with a RiverRay ADCP



USGS mapped Pool 7 in the 1990s.



2023 Depths overlaid on USGS
1990s survey data.

